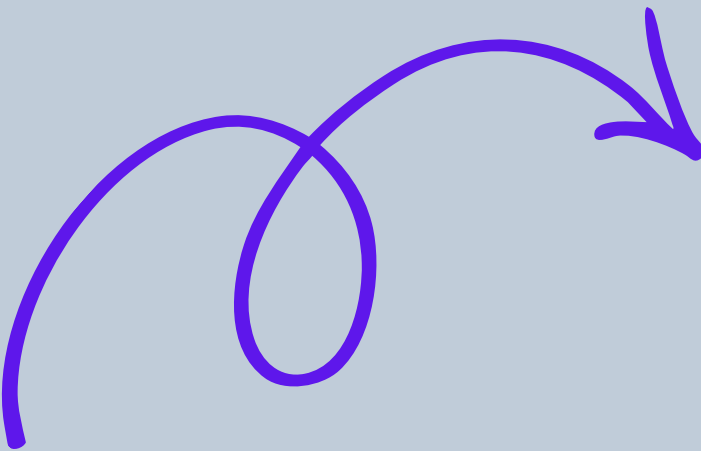


BIGFORK SCHOOLS



NO SCHOOL
Spring Break
March 23-27



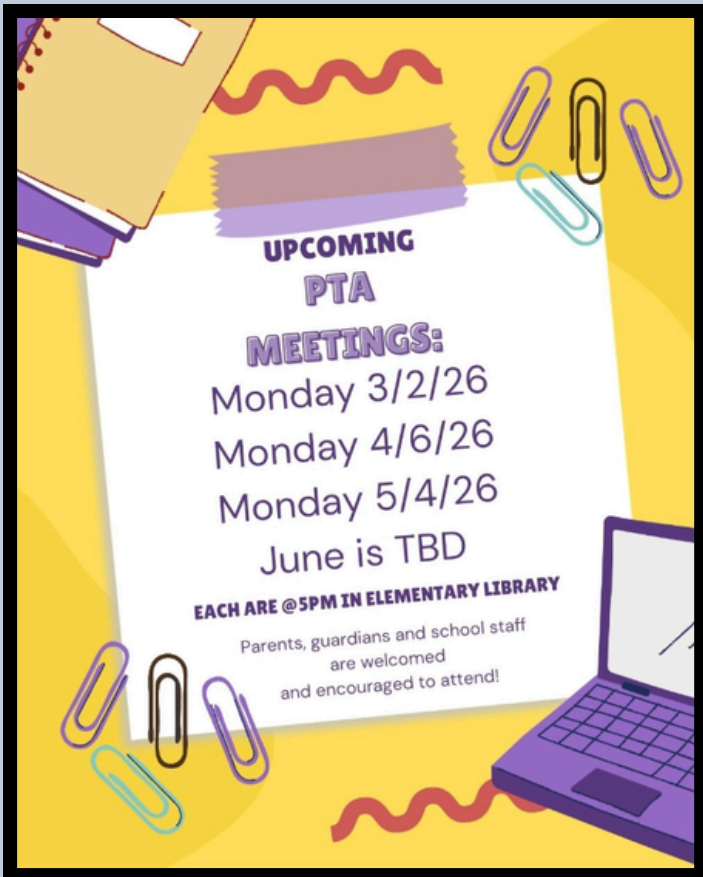
Ready.....
Set....Kindergarten!!!!



**BIGFORK SCHOOL
KINDERGARTEN
REGISTRATION
FRIDAY, APRIL 17, 2026**

PLEASE CALL 837-7412
To schedule your appointment.
Children must be 5 by September 10th.
Be sure to have your child's
**BIRTH CERTIFICATE AND IMMUNIZATION
RECORD**
AT THE TIME OF APPOINTMENT.

**Welcome to
Kindergarten**



**UPCOMING
PTA
MEETINGS:**
Monday 3/2/26
Monday 4/6/26
Monday 5/4/26
June is TBD

EACH ARE @5PM IN ELEMENTARY LIBRARY

Parents, guardians and school staff
are welcomed
and encouraged to attend!



Get Ready For MT!

Trimester 3: Musical Theatre

WHEN: Saturdays mornings for one hour.

Grades 2nd - 4th: 9:00 AM

Grades 5th - 7th: 10:15 AM

Grades 8th - 12th: 11:30 AM

8 WEEKS: Feb 7, 14, 21, 28, March 7, 14, April 4, 11
(breaks to follow the Bigfork school calendar)

REGISTRATION: Opens January 21

LIMITED SPACE: 20 students per age group

PRICE: \$120 per student (\$40 deposit at signup)
(Ask about sibling discounts)

SHOES: Jazz Shoes or
5 - 12 grade may wear Character Heels!

Sign up at our NEW WEBSITE:
[https://bigforkchildrenstheatre.org/
programs/dance-musical-theatre](https://bigforkchildrenstheatre.org/programs/dance-musical-theatre)



LOST & FOUND
Alot of items
accumulating.
Please take a look.

Bigfork School

PTA

everychild.one voice.

Sign up today!



Threads ...A Student Resource

Threads is a FREE resource for Bigfork area Students. Threads offers a variety of age appropriate, new and nearly new, gently worn clothing, outerwear, shoes, new socks/underwear, personal care items, and school supplies for students who may need them. Threads is an ongoing project of BLSC (Bigfork Ladies Service Club), giving our local students the opportunity to get what they may need to be successful in school as well as an opportunity to learn the value of giving back and helping one another.

Located on the upstairs floor of the Methodist Church just east of the High School, we love to have students visit, even for just a snack and a short break from their school day!

We welcome ALL students to visit Threads with a parent, counselor or teacher and encourage them to take what they need and in turn, donate items for others when possible.

Recycle/Reuse/Responsible

Open Thursdays from 9-3pm

406-249-5820



MENU

2026 MARCH

Harvest of the Month:

Monday	Tuesday	Wednesday	Thursday	Friday
23	24	25	26	27
02 B: Muffin L: Corn Dog, Salad Bar, Sliced Peaches	03 B: Bagelw/Cream Cheese L: Breaded Chicken Parmesan Sandwich, Salad Bar, Fruit Juice	04 B: Granola Bar L: Pizza, Fresh Veggies, Mixed Berry Cup	05 B: Banana Bread L: Orange Chicken, Coconut Rice, Mandarin Oranges	06 B: Cereal L: Turkey Pot Pie, Salad Bar, Cinnamon Apples
09 B: Muffin L: Meatball Sub Sandwich, Salad Bar, Apricot Cup	10 B: Bagelw/Cream Cheese L: BBQ Pork Sandwich, Cole Slaw, Applesauce	11 B: Fruit Parfait L: Pizza, Fresh Veggies, Fresh Apple	12 B: Banana Bread L: Turkey Bacon Ranch Wrap, Salad Bar, Strawberries	13 B: Cereal L: Sweet&Sour Chicken, Coconut Rice, Mandarin Oranges
16 B: Muffin L: Beef Taco, Corn Chips, Sliced Pears	17 B: Bagelw/Cream Cheese L: Sloppy Joe, Salad Bar, Fresh Apple	18 B: Granola Bar L: Pizza, Fresh Veggies, Sliced Peaches	19 B: Banana Bread L: Chicken Fajita, Corn and Peppers, Fresh Tangerine	20 B: Cereal L: Egg Rolls, Coconut Rice, Salad Bar, Oranges
23	24 ENJOY	25 YOUR	26 BREAK!!	27
30 B: Muffin L: Taco Burger, Fresh Veggies, Apricot Cup	31 B: Bagelw/Cream Cheese L: Hot Dog, Sun Chips, Sliced Peaches	01	02	

BIGFORK CAFETERIA PRICES AND INFORMATION

Students

Breakfast K-5 \$2.00
Breakfast 6-12 \$2.25

Lunch K-5 \$3.25
Lunch 6-12 \$3.75

Reduced Breakfast K-12 .30
Reduced Lunch K-12 .40

Milk \$.60

Adults

Parents/Visitors \$5.25

You can deposit money online at: www.mymealtime.com, or cash/check to the teacher or secretary with your child's name on the envelope.

Thank you for your support!

Contact Information
Roger Vanlandingham
Food Service Director
rvanlandingham@bigfork.k12.mt.us

A new free/reduced meal form needs to be filled out every year



2025-26 Free/Reduced Meals

Click above for form. You can fill out online or print then send to rvanlandingham@bigfork.k12.mt.us or drop off at the district office this summer.



Homeless Liaison for Bigfork Schools
Tom Stack, Superintendent
Please click [here](#) for more information.



SCHOOL CALENDAR

2025-2026

Bigfork School District 38 2025-2026 Calendar

K-12 School Day: 8:00 am - 3:20 pm
Wednesday Late Start: 8:40 am - 3:20 pm

August 26, 27, 28 - Teacher In-Service Days
September 1 - Labor Day - No School
September 2 - First Day of School - Release 1:30*

October 16 & 17 - MEA Convention - No School
October 30 - End of 1st Quarter
October 31 - PIR - Parent Teacher Conference - No School

November 25 - End of 1st Trimester
November 26, 27, 28 - Thanksgiving Break - No School
December 22 - January 2 - Christmas Break - No School

January 19 - PIR - No School
January 23 - End of 1st Semester
February 16 - No School
March 23 - 27 - Spring Break - No School
April 10 - End of 3rd Quarter

May 25 - Memorial Day
June 6 - High School Graduation
June 11 - 8th Grade Graduation
June 12 - Last Day of School - 1:30*

August 2025						
S	M	T	W	T	F	S
						1 2
3	4	5	6	7	8	9
10	11	12	13	14	15	16
17	18	19	20	21	22	23
24	25	PIR	PIR	PIR	28	30
31						

September 2025						
S	M	T	W	T	F	S
	X	*	3	4	5	6
7	8	9	10	11	12	13
14	15	16	17	18	19	20
21	22	23	24	25	26	27
28	29	30				

October 2025						
S	M	T	W	T	F	S
			1	2	3	4
5	6	7	8	9	10	11
12	13	14	15	X	X	18
19	20	21	22	23	24	25
26	27	28	29	EQ	PTC	

November 2025						
S	M	T	W	T	F	S
						1
2	3	4	5	6	7	8
9	10	11	12	13	14	15
16	17	18	19	20	21	22
23	24	ET	X	X	X	25
30						

December 2025						
S	M	T	W	T	F	S
	1	2	3	4	5	6
7	8	9	10	11	12	13
14	15	16	17	18	19	20
21	X	X	X	X	X	27
28	X	X	X			

X	No School
*	First & Last Day of School - Release 1:30*
PIR	Teacher Work Day/No School
PTC	Parent Teacher Conference
EQ	End of Quarter
ET	End of Trimester
ES	End of Semester

January 2026						
S	M	T	W	T	F	S
				X	X	3
4	5	6	7	8	9	10
11	12	13	14	15	16	17
18	PIR	20	21	22	ES	24
25	26	27	28	29	30	31

February 2026						
S	M	T	W	T	F	S
1	2	3	4	5	6	7
8	9	10	11	12	13	14
15	X	17	18	19	20	21
22	23	24	25	26	27	28

March 2026						
S	M	T	W	T	F	S
1	2	3	4	5	ET	7
8	9	10	11	12	13	14
15	16	17	18	19	20	21
22	X	X	X	X	X	28
29	30	31				

April 2026						
S	M	T	W	T	F	S
			1	2	3	4
5	6	7	8	9	EQ	11
12	13	14	15	16	17	18
19	20	21	22	23	24	25
26	27	28	29	30		

May 2026						
S	M	T	W	T	F	S
					1	2
3	4	5	6	7	8	9
10	11	12	13	14	15	16
17	18	19	20	21	22	23
24	X	26	27	28	29	30
31						

June 2026						
S	M	T	W	T	F	S
	1	2	3	4	5	6
7	8	9	10	11	*	13
14	15	16	17	18	19	20
21	22	23	24	25	26	27
28	29	30				